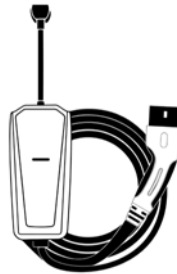
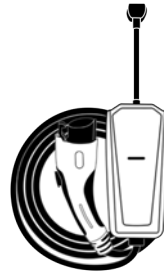
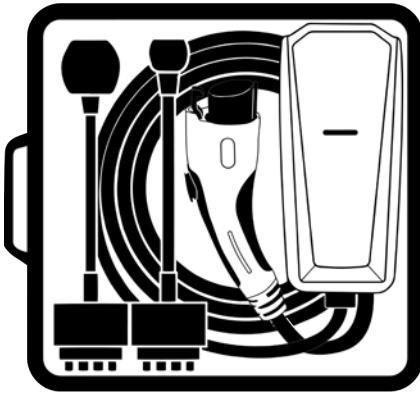


Ampure Go User Guide



This page intentionally left blank.

A NOTE ON CUSTOMER SUPPORT

Please have your serial number ready

when contacting customer support.

Company Information:

Ampure

1333 Mayflower Ave., Ste. 100

Monrovia, CA 91016

<https://www.ampure.com>

Contents

Section 1 INTRODUCTION 5

SYMBOL USAGE 6

ABOUT YOUR AMPURE GO 7

MOVING & STORAGE INSTRUCTIONS 9

CHARGER COMPONENTS 10

TECHNICAL DATA – LABELS 11

SPECIFICATIONS 13

Section 2 USING YOUR Ampure GO 15

KNOW YOUR INDICATOR LIGHTS 16

CHARGING YOUR VEHICLE 17

A NOTE ON AUTO-RESTART 18

CARE INSTRUCTIONS. 18

Section 3 TROUBLESHOOTING 19

TRUBLESHOOTING GUIDE 20

APPENDIX 23

INSTALLING THE WALL HANGER 24

WALL HANGER MOUNTING INSTRUCTION. 24

IMPORTANT SAFETY INSTRUCTIONS
PERTAINING TO A RISK OF ELECTRIC SHOCK 25

STATE OF CALIFORNIA PROPOSITION 65 WARNINGS 27

FCC INFORMATION 27





SAFETY FEATURES 28

INDEX 29

Section 1

INTRODUCTION

SYMBOL USAGE

- DANGER**  Indicates information about safety practices which, if not followed, may result in serious injury or death.
- Risk of electric shock – parts inside this product are a risk of shock to persons.
- WARNING**  Indicates information about safety practices which, if not followed, could result in personal injury or are necessary to prevent fire or equipment overheating.
- Do not operate the Ampure Go on an ungrounded power grid (e.g. IT networks). Only operate the charger on grounded power grids.
-  Operating the charger at altitudes higher than 13,123 ft (4,000 m) above sea level is not recommended.
- NOTE**  Indicates helpful information for installation or usage, but does not contain personnel or equipment safety-related information.

ABOUT YOUR AMPURE GO

The Ampure Go is an easy-to-use, compact mobile power supply for your electric vehicle. The charger supplies and manages AC power to your electric vehicle.

WARNING



It is recommended that electrical outlets for use with your charger be installed by a licensed, qualified electrician. To avoid serious injury or death, installation must comply with the provisions of the National Electric Code (NEC) and all local codes. In cases of conflict between local codes and the NEC, local codes shall take precedence.

Do NOT DROP the control box or coupler.

Do NOT use if stored outside the temperature range specified.

If the cable becomes separated from the control box or the charger coupler, DO NOT ATTEMPT TO REPAIR THE CABLE YOURSELF. Contact your local Ampure dealer.

WARNING

When using your Ampure Go, basic precautions should always be followed, including:

- See the warnings on the charger cord label. Read the warnings before operating the product for the first time. Read all instructions in this guide before using this product.
- Never use the charger with an extension cord.
- Do not plug into worn or severely degraded plugs.
- Shock hazard – be sure the plug is fully inserted into the wall outlet so there are no exposed blade surfaces.
- Children should be supervised when in the vicinity of the charger while plugged in.
- Do not put insert fingers into the electric charger coupler.
- To reduce the risk of fire, only connect the charger to a circuit with 40 amps maximum branch circuit overcurrent protection in accordance with NEC and local electrical code.
- Do not use in a commercial garage classified for internal combustion engine vehicles due to vapors of flammable liquids (gasoline) being present.

CAUTION

CAUTION: Do not connect or disconnect the adapter from the control box while it is in use or charging, i.e., the adapter plug is connected to the power outlet or the vehicle connector coupler is engaged to a vehicle inlet.

CAUTION: Do not operate the charger in a temperature outside its operation range of -22°F to +122°F (-30°C to +50°C).

CAUTION: Store the charger in a clean dry place in a temperature range between of -22°F to +185°F (-30°C to 85°C).

WARNING

WARNING: Do not plug the charger into an electrical outlet submerged in water or covered in snow.

WARNING: Do not use the charger during a severe rain, snow or an electrical storm.

WARNING: Avoid moisture, water, snow and foreign objects at all times.

NOTE

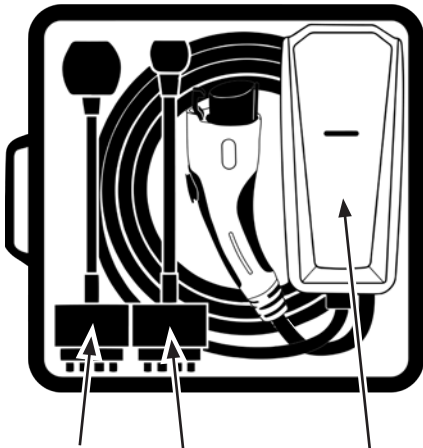
This product will not charge and will give a fault indication if ground is not present. Do not replace the plug with retrofit component – there are critical safety devices in the plug, and the device will not operate if it is replaced. Do not modify. This charger contains no user modifiable/repairable parts, even for experts.

MOVING & STORAGE INSTRUCTIONS**NOTE**

Keep the charger and charger cable inside when not in use (out of the elements / inside the garage is acceptable). Do not use any third-party adapters, as this can lead to a fire. Use only plugs offered from Ampure with an approved outlet. Do not unplug adapters while charging or while the charger is plugged into the wall. The outlet must be in good condition and meet up-to-date NEC code. Make sure the cable is completely unwound before charging.

The device is not be lifted or carried by the flexible cord (adapter), nor the EV cable. When moving the cordset, Ampure recommends supporting the control box, coupler and EV cable to prevent damage to those components.

CHARGER COMPONENTS



High-Power
Adapter

Low-Power
Adapter

Control
Box



SAE Type 2 Coupler



IEC Type 1 Coupler

Your Ampure Go comes standard with two adapters: one high power and one low power. Please refer to your vehicle owner's manual for details on included and available adapters and accessories.

TECHNICAL DATA – LABELS

IC-CPD Caution U.S.

Technical Specifications →

Information →

Warnings →

Input/Output Rating Consommation/ Rendement Calificación eléctrica de entrada/ Calificación eléctrica de salida.	120-240V AC  50-60 Hz, MAX 32A. See Adapter Plug. Vous voyez la fiche de l'adaptateur. / Ve el enchufe del adaptador.
Temperature Rating / Cote de température / Calificación de temperatura	-30C to 50C -22 F to 122 F
Type / La Catégorie / Tipo	6, IP67

 Read owner's manual before operating. /
Vous lisez le manuel de l'utilisateur avant d'utiliser.
/ Lee el manual del propietario antes de operar.





**WARNING / AVERTISSEMENT /
ADVERTENCIA**

- This device is intended only for charging vehicles not requiring ventilation during charging. / Cet appareil est uniquement destiné à charger des véhicules ne nécessitant pas de ventilation pendant la charge. / Este dispositivo está diseñado solo para cargar vehículos que no requieren ventilación durante la carga.
- This device has an automatic reset feature. / Cet appareil est équipé d'un dispositif de réinitialisation automatique. / Este dispositivo tiene una función automática de reprogramación.
- Do not use this with an extension cord. / Ne pas utiliser cet appareil avec une rallonge électrique. / No lo use con un cordón de extensión.

**CAUTION / ATTENTION /
PRECAUCIÓN**

- Connect only to properly grounded outlets. / Brancher uniquement sur des prises de courant dûment mises à la masse. / Conectar solamente a tomacorrientes con la descarga apropiada a tierra.
- Do not use this product if there is any damage to the unit. / N'utilisez pas ce produit s'il y a des dommages à l'unité. / No use este producto si hay algún daño en la unidad.
- Do not remove cover or attempt to open the enclosure. No user serviceable parts inside. Refer servicing to qualified service personnel. / Ne pas retirer le couvercle ou essayer d'ouvrir le boîtier. Aucune pièce ne peut être changée par l'utilisateur. Faire appel à une personne qualifiée pour tout service de dépannage. / No sacue la funda ni intente abrir el armazón. No hay piezas interiores que pueda reparar el usuario. Derive el servicio a personal de servicio calificado.

Product ID SAE

PN: XXXXXXXX
 SN: XXXXXXXXXXXXX
 MN: XXXXXX-XXXXXX
 DESIGNED IN CALIFORNIA
 MADE IN MEXICO

Part Number

Serial Number

Model Number

IC-CPD Caution EU and UK

Technical Specifications →

230V AC, MAX 32A
50-60 Hz, 1P + N + PE
IΔN 30mA_{ac} / 6mA_{ac}
IP67 Enclosure

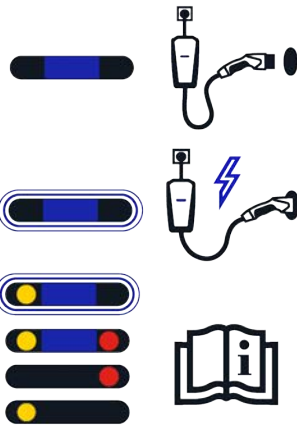


IC-CPD



Information →

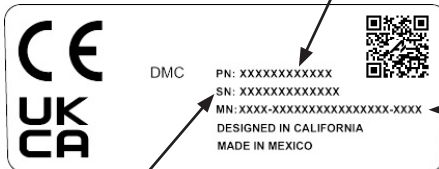
Warnings →



Ampure
1333 S Mayflower Ave.
Monrovia, CA 91016

Product ID IEC

Part Number



Manufacturing Number

Serial Number

SPECIFICATIONS

Charge Model	SAE (North America)	IEC (Europe)
Voltage:	120-240 VAC (Intended for Indoor or Outdoor use)	230 VAC
Maximum current:	32 amps max continuous (Intended for Indoor or Outdoor use)	32 amps max continuous (Intended for Indoor or Outdoor use)
Frequency:	60 Hz	50 Hz
Power draw at Idle:	< 2 watts	< 2 watts
During charging:	< 4 watts	< 4 watts
EV Cable length:	Approx. 20 ft (6.1 m)	Approx. 18.4 ft (5.6 m)
Weight:	8.6 lb. (3.9 kg)	9.2 lbs (4.2 kg)
Temperature – operating:	-22°F to +122°F (-30°C to +50°C)	-22°F to +122°F (-30°C to +50°C)
Temperature – storage:	-22°F to +185°F (-30°C to +85°C)	-22°F to +185°F (-30°C to +85°C)
Enclosure Environmental Rating:	NEMA Type 6 / IP67	NEMA Type 6 / IP67
Ventilation:	Not required	Not required

Specifications are subject to change without notice.

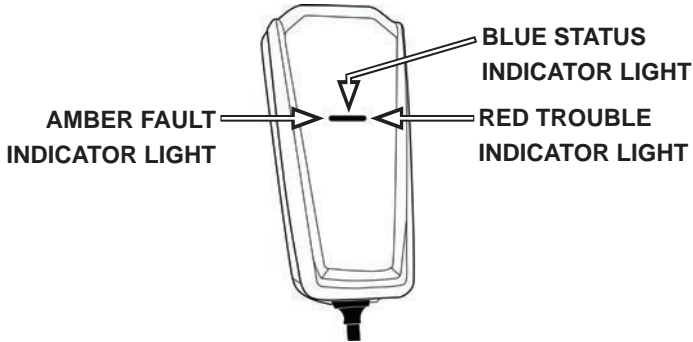
This page intentionally left blank.

SECTION 2

USING YOUR AMPURE GO

KNOW YOUR INDICATOR LIGHTS

The Indicator light on your charger is the first thing you will notice when you are about to plug in or unplug your vehicle. Before getting started, here is a simple explanation of the indicators.



AMBER — FAULT

The AMBER FAULT Indicator illuminates to show the charger is rebooting after an error. Refer to the Troubleshooting Guide in Section 3 for more information.

BLUE — STATUS

When plugged into the wall outlet, the BLUE STATUS Indicator illuminates to show the charger is ready to use. During charging, the BLUE STATUS indicator pulses ON and OFF every two seconds. Refer to the Troubleshooting Guide in Section 3 for more information.

RED — TROUBLE

The RED TROUBLE Indicator illuminates when the charger detects an error. If the RED TROUBLE Indicator illuminates, the charger will not deliver power to the vehicle. The error must be corrected before a charging cycle can begin or continue. Refer to the Troubleshooting Guide in Section 3 for more information.

NOTE



The following indicates a normal startup safety check.

1. When first plugged into a wall socket, the AMBER, BLUE and RED indicators blink once.
2. Then the BLUE Indicator turns ON, followed by a blink of the RED indicator.
3. Lastly, the BLUE indicator turns OFF, then ON again.

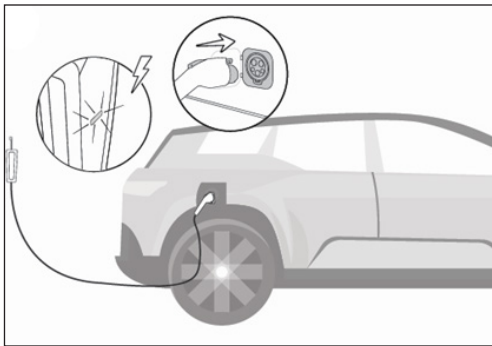
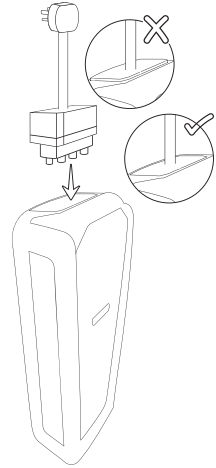
The Ampure Go comes with two adapters. If switching adapters between charges, the startup system check will occur again.

CHARGING YOUR VEHICLE

1. Make sure the vehicle is in park (P).
2. Insert the adapter firmly into the control box. Then firmly insert the other end of the adapter into the appropriate wall outlet.

NOTE: You will hear an audible “click” when the adapter is correctly inserted into the control box – make sure the adapter is fully inserted and flush with the control box before inserting the other end into the wall outlet. Otherwise, it will trigger a fault or cause a longer charging session. To remove the adapter, firmly take hold of the adapter by the plug and pull it firmly away from the control box.

3. When the wall plug is inserted the AMBER, BLUE and RED indicators will blink once. Then the BLUE Indicator turns ON, followed by a blink of the RED indicator. Lastly, the BLUE indicator turns OFF, then ON again. If you switch adapters between charges, this startup system check will occur again.
4. Plug the coupler into your vehicle’s charging inlet. When the coupler is fully inserted, there will be an audible clicking sound.



5. When charging begins, the BLUE STATUS Indicator pulses ON and OFF approximately every two seconds.
6. When charging ends, the BLUE STATUS Indicator illuminates solid blue.
7. To disconnect the coupler from the vehicle charging port: Press the release button on the coupler, then pull the coupler away from the vehicle.

NOTE

To safely discontinue charging at any time, follow the disconnect instructions in Step 7. Charging will automatically and safely stop. The BLUE STATUS Indicator remains ON (without blinking) when the coupler is removed.

When plugging the charger into an unfamiliar wall outlet, it is good practice to take few minutes to observe the charging process and confirm it is supplying the expected AC charging power before leaving the charger unattended.

The RED TROUBLE Indicator illuminates if it is not charging. The unit will turn OFF if a breaker or infrastructure GFI is tripped.

For more information about how to charge your vehicle, including charger settings and scheduling, refer to the vehicle owner's manual.

A NOTE ON AUTO-RESTART

The Auto-Restart feature helps to ensure that your vehicle is charged and ready for use when needed. A charge may be interrupted if an error is detected. Charging resumes once the error is no longer detected. The RED TROUBLE Indicator illuminates during an error condition.

The exception to immediate Auto-Restart is when the interruption is due to a ground fault circuit interruption (GFI/GFCI). The charger will attempt to restart 15 minutes after this happens. After a fourth attempt to restart, the charger shuts down and the RED TROUBLE Indicator stays ON.

If the fault persists, do not continue to try to charge your vehicle. Contact Ampure Customer Support (see page 3).

CARE INSTRUCTIONS

Do not use hard cleaners or solvents as this may damage your Ampure Go. Do not kink or place undue stress on the charger cables. If the charger overheats, bring it out of direct sunlight.

Section 3

TROUBLESHOOTING

TROUBLESHOOTING GUIDE:

Please refer to this Troubleshooting Guide for possible solutions to common errors or difficulties with charging your vehicle using your Ampure Go.

NOTE



Do not attempt to repair or service the charger yourself. There are no user serviceable parts inside this product.

A RED TROUBLE Indicator may be triggered by several sources including the charger, the utility service, or the vehicle. See the Troubleshooting tips below.

The RED TROUBLE Indicator turns ON when the charger detects an error, whether it is connected to your vehicle or not. When the RED TROUBLE Indicator is ON, the charger will not deliver power to the vehicle. The error must be corrected before charging begins or resumes.

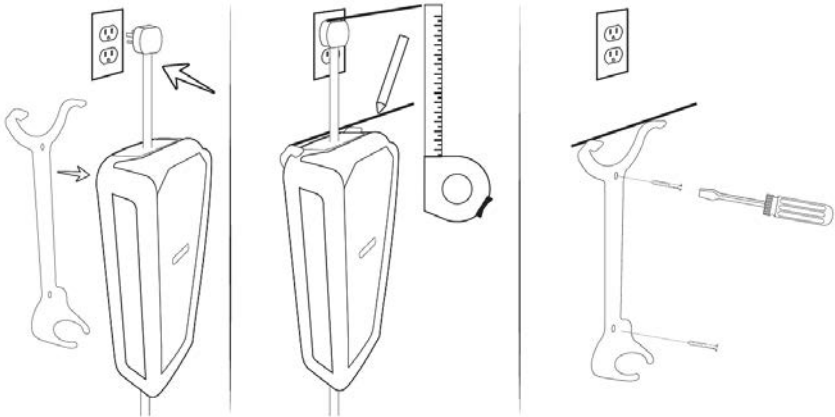
CHARGER MODE	AMBER INDICATOR	BLUE INDICATOR	RED INDICATOR	MODE EXPLANATION	TROUBLESHOOTING ACTION
UNPOWERED	OFF	OFF	OFF	THE CHARGER IS NOT POWERED. IF LED INDICATORS ARE OFF AFTER PLUGGING THE ADAPTER INTO THE OUTLET, THERE MAY BE NO POWER FROM THE WALL OUTLET.	MAKE SURE THE OUTLET IS OPERATIONAL AND THE CIRCUIT BREAKER IS IN THE 'ON' POSITION. TRY USING ANOTHER OUTLET. ENSURE ADAPTER IS FULLY INSERTED. ENSURE THE PLUG IS NOT SEVERELY DEGRADED. IF THE ERROR PERSISTS, CONTACT AMPURE CUSTOMER SUPPORT.
CHARGING	OFF	PULSING	OFF	THE CHARGER IS SUCCESSFULLY CHARGING.	NO ACTION REQUIRED.
STANDBY	OFF	ON	OFF	THE CHARGER IS POWERED AND READY TO CHARGE. THE CHARGER IS NOT CHARGING THE VEHICLE.	IF YOU EXPECT THE CHARGER TO BE CHARGING THE VEHICLE, ENSURE THE VEHICLE COUPLER IS PROPERLY INSERTED INTO THE VEHICLE. CHECK AND ADJUST YOUR CHARGING TIME PREFERENCES IN SYNC. IF THE VEHICLE IS STILL NOT CHARGING, CONTACT AMPURE CUSTOMER SUPPORT.
REBOOTING	ON	ON	ON	THE CHARGER IS AUTOMATICALLY RECOVERING AFTER ENCOUNTERING AN ERROR.	WAIT FOR THE CHARGER TO RETURN TO STANDBY. IF THE CHARGER CYCLES FOR MORE THAN 2-3 MINUTES, UNPLUG THE VEHICLE COUPLER. UNPLUG AND REPLUG IN THE ADAPTER. IF THE ISSUE PERSISTS, CONTACT AMPURE CUSTOMER SUPPORT.

CHARGER MODE	AMBER INDICATOR	BLUE INDICATOR	RED INDICATOR	MODE EXPLANATION	TROUBLESHOOTING ACTION
CHARGING REDUCED	ON	PULSING	OFF	THE CHARGER IS CHARGING AT A REDUCED RATE DUE TO OVERHEATING.	ENSURE THE ADAPTER AND CONTROL BOX ARE PROPERLY CONNECTED. DISCONNECT, THEN RECONNECT THE ADAPTER. IF THE CHARGER IS WARM OR IN A HOT ENVIRONMENT, TRY CHARGING IN A COOLER AREA. TRY A DIFFERENT OUTLET. TRY A DIFFERENT ADAPTER IF YOU HAVE ONE AVAILABLE. IF THE ERROR PERSISTS, CONTACT AMPURE CUSTOMER SUPPORT.
CHARGING REDUCED (AC PLUG OR WALL OUTLET)	1 FLASH	PULSING	OFF	THE CHARGER IS CHARGING AT A REDUCED RATE DUE TO OVERHEATING OF THE ADAPTER OR THE WALL OUTLET.	ENSURE THE ADAPTER AND CONTROL BOX ARE PROPERLY CONNECTED. DISCONNECT, THEN RECONNECT THE ADAPTER. IF THE CHARGER IS WARM OR IN A HOT ENVIRONMENT, TRY CHARGING IN A COOLER AREA. TRY A DIFFERENT OUTLET. TRY A DIFFERENT ADAPTER IF YOU HAVE ONE AVAILABLE. IF THE ERROR PERSISTS, CONTACT AMPURE CUSTOMER SUPPORT.
USER TROUBLESHOOTING	ON	OFF	OFF	THE CHARGER HAS ENCOUNTERED A FAULT THAT REQUIRES TROUBLESHOOTING.	ENSURE THE ADAPTER AND CONTROL BOX ARE PROPERLY CONNECTED. DISCONNECT, THEN RECONNECT THE ADAPTER. IF THE CHARGER IS WARM OR IN A HOT ENVIRONMENT, TRY CHARGING IN A COOLER AREA. TRY A DIFFERENT OUTLET. TRY A DIFFERENT ADAPTER IF YOU HAVE ONE AVAILABLE. IF THE ERROR PERSISTS, CONTACT AMPURE CUSTOMER SUPPORT.
NON-RECOVERABLE FAULT	OFF	OFF	ON	THERE IS AN INTERNAL FAULT IN THE CHARGER THAT CANNOT BE RECOVERED	TRY A DIFFERENT ADAPTER IF YOU HAVE ONE AVAILABLE. IF ERROR PERSISTS, CONTACT AMPURE CUSTOMER SUPPORT.
NON-RECOVERABLE FAULT (ADAPTER)	OFF	OFF	1 FLASH	THERE IS AN INTERNAL FAULT IN THE ADAPTER THAT CANNOT BE RECOVERED.	TRY USING ANOTHER ADAPTER IF YOU HAVE ONE AVAILABLE. IF NOT, CONTACT AMPURE CUSTOMER SUPPORT ABOUT OBTAINING A REPLACEMENT. IF YOUR WARRANTY HAS EXPIRED, YOU CAN ORDER A REPLACEMENT FROM YOUR AMPURE CUSTOMER SUPPORT.
GROUND LEAKAGE FAULT	OFF	OFF	PULSING	ELECTRICAL CURRENT IS LEAKING THROUGH A POTENTIALLY UNSAFE PATH.	POTENTIAL SHOCK HAZARD — IMMEDIATELY TURN OFF CIRCUIT BREAKER FOR THE OUTLET WITHIN HOME. DISCONTINUE USE. CONTACT AMPURE CUSTOMER SUPPORT ABOUT OBTAINING A REPLACEMENT.

This page intentionally left blank.

APPENDIX

INSTALLING THE WALL HANGER



WALL HANGER MOUNTING INSTRUCTION

NOTE



Intended for indoor or outdoor use.

1. Choose a location to install the wall hanger.

The wall hanger should be mounted to a wall stud, located close to the wall outlet and your vehicle's charge receptacle.

NOTE: Drywall and masonry wall installations require the use of appropriate fasteners.

2. Measure up approximately 8 inches from the desired receptacle and mark the location. Before drilling holes, it is recommended to verify the control box fits correctly in the hanger after it is plugged in.
3. Drill the preferred mounting holes through the back of the wall hanger using a 7/32-inch drill bit.
4. Using a Phillips screwdriver, tighten the screws for the wall hanger.

IMPORTANT SAFETY INSTRUCTIONS PERTAINING TO A RISK OF ELECTRIC SHOCK

DANGER



High voltage is present in your electric meter housing and power distribution service panel. Contact with high voltage can cause death or serious personal injury.

Risk of electric shock – Parts inside this product have a risk of shocking persons.

WARNING



DO NOT operate your charger with a damaged adapter, cable, charger coupler, or control box. Visually inspect the cable, charger coupler and charger module for damage before each use. Do not operate if any visual damage is apparent anywhere, then contact Ampure Customer Support (page 3).

ALWAYS position the charger cable so it will not be driven over, stepped on, tripped over, damaged or stressed. To prevent personal injury and damage to the charger, ALWAYS stow the charger on hanger or in the stowage bag after use.

Use the charger only to supply power to electric vehicles equipped with an SAE J1772 compliant vehicle receptacle. For more information, refer to the vehicle owner's manual.

NOTE



Disconnect the charger from the wall outlet before cleaning it. To clean the charger, wipe it with a clean cloth dampened with water or a mild detergent solution suitable for use on automobile paint. Do not use chemicals or solvents. Do not submerge the charger in any type of fluid.

WARNING

This product must be grounded. If it should malfunction or break down, grounding provides a path of least resistance for electric current to reduce the risk of electric shock. This product is equipped with an adapter having an equipment grounding conductor and a grounding plug. The plug must be inserted into an appropriate outlet that is properly installed and grounded in accordance with all local codes and ordinances.

Improper connection of the electrical outlet grounding conductor might result in a risk of electric shock. Check with a qualified electrician if you are uncertain whether or not the electrical outlet is properly grounded. Do not modify the plug provided with the product if it does not fit in the outlet – have a proper outlet installed by a qualified electrician.

SAVE THESE INSTRUCTIONS

This manual contains important instructions for the Ampure Go that should be followed during installation, operation and maintenance of the product.

STATE OF CALIFORNIA PROPOSITION 65 WARNINGS

WARNING



This product contains a chemical known to the State of California to cause cancer or birth defects or other reproductive harm.

FCC INFORMATION

This device complies with Part 15 of the FCC Rules. Operation is subject to the following two conditions:

- This device may not cause harmful interference.
- This device must accept any interference received, including interference that may cause undesired operation.

This product has been designed to protect against Radio Frequency Interference (RFI). However, there are some instances where high-powered radio signals or nearby RF- producing equipment could affect operation.

If you suspect your charger is receiving interference, take the following steps before contacting Customer Support for service:

1. Relocate away from electrical appliances or equipment during charging.
2. Turn off nearby electrical appliances or equipment during charging.

Important! Changes or modifications to this product by anyone other than an authorized service provider will void FCC compliance and the product will not be serviceable.

SAFETY FEATURES

The charger is designed with your safety as the highest priority and includes the following safety features to protect against the risk of electric shock:

- **Service Ground Check:** The charger constantly checks for the presence of a service ground connection. If the service ground ever fails, the charger RED TROUBLE Indicator turns ON and shuts down power to the vehicle.
- **Thermal Event Sensor:** The charger module senses out-of-ordinary thermal events and will decrease charging current or shut the unit down if required.
- **GFCI Protection:** The charger is equipped with a ground fault circuit interruption (GFI/GFCI) reaction system to protect against electric shock. If the charger module detects an output ground fault, it will shut down power to the output cable and illuminate the RED TROUBLE indicator.
- **Insulation:** The charger module, adapter, cable assembly, and charge coupler are completely insulated (no exposed live parts) to protect against electric shock.
- **Unintentional Disconnection:** The charge coupler is designed to minimize unintentional disconnection. A pilot signal wire in the cable and charge coupler eliminates the possibility of electric shock when not connected to a vehicle or if an unintended disconnect occurs during a charge. Disconnection during charging is safe.

INDEX

A		R	
auto restart	18	receptacle	24-25
B		RED TROUBLE indicator	16, 18, 20, 28
blue status indicator	16-18	release button	17
C		S	
charger coupler	7-8, 25	SAE J1772	25
circuit breaker	20-21	safety features	28
components	9-10	serial number	3, 11-12
customer support.....	3, 18, 20-21, 25, 27	service ground	28
E		STATUS indicator	16-18
electric shock	6, 25-26, 28	T	
environmental rating	13	temperature	7-8, 13
GFI/GFCI	18, 28	TROUBLE indicator	16, 18, 20, 28
H		W	
hanger	24-25	warranty	21
I		weight	13
insulated	28		
indicator light	16		
O			
output ground	28		
outlet	7-9, 16-18, 20-21, 24-26		
P			
pilot signal wire	28		

Ampure
1333 Mayflower Ave., Ste. 100
Monrovia, CA 91016
www.ampure.com

Doc ID 5914484 A01 • 08/2024 • © Ampure 2024